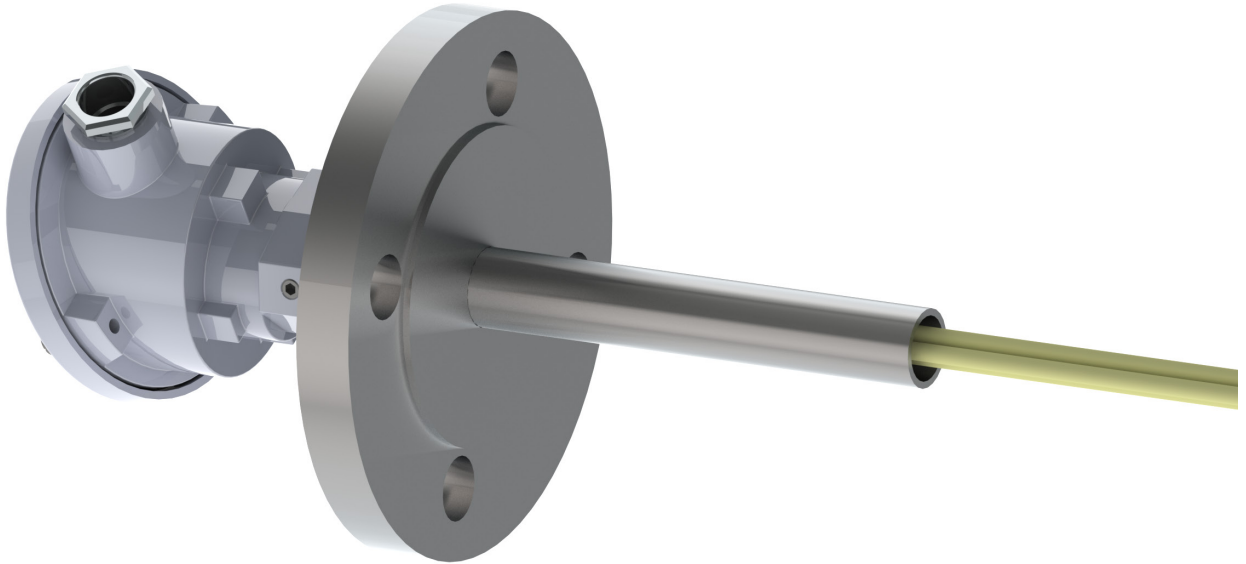


Connection with standard flange DIN EN 1092-1

Connection with standard flange DIN EN 1092-1



16

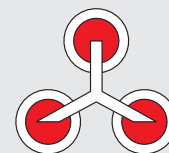
The type is also used for applications up to 21 bar high pressure or in hydrogen atmospheres. Standard connection is a flange DIN EN 1092-1 with a nominal width DN25 PN25. Further nominal widths and types, for example with notch, are available on request.

Order chart:

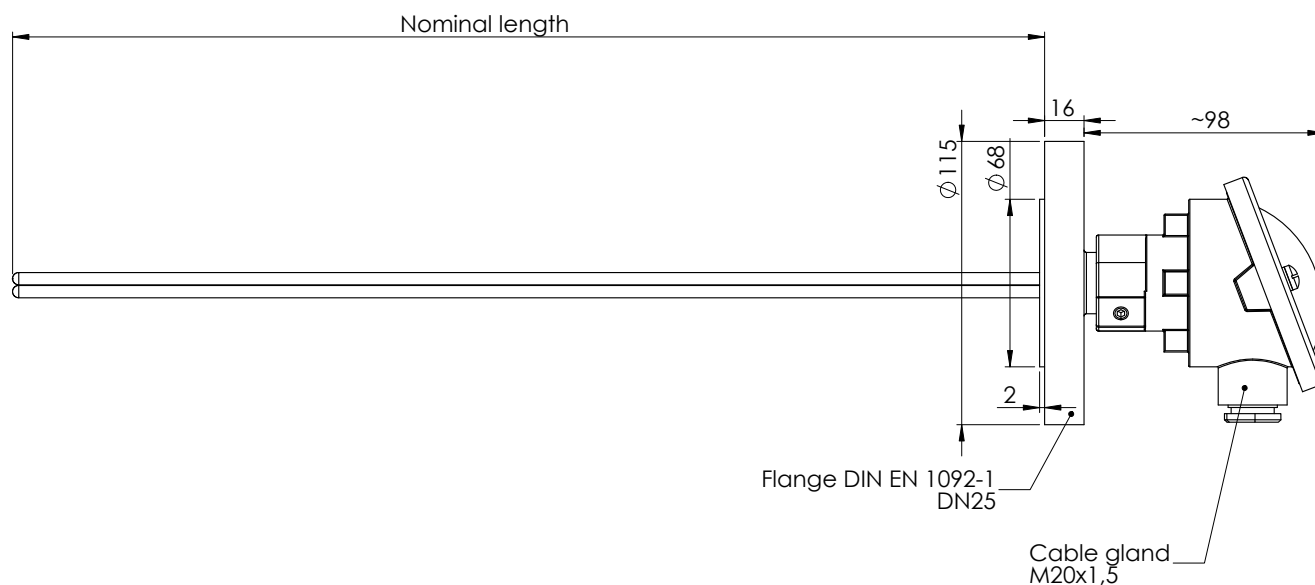
8	-	<i>PPXXZZ</i>	-	<i>LLLLA</i>
		PP – Vacuum tight pressure proof up to 20 – 20 bar XX – Number of thermocouples (TP) 02 – 1 TP + empty tube 03 – 2 TP + empty tube ZZ – Alloy of thermocouple 01 – PtRh10% - Pt (type S) 02 – PtRh13% - Pt (type R) 03 – PtRh30% - PtRh16 (type B) 05 – NiCrSi – NiSi (type N)		LLLL – Nominal length [mm] 0400 – 400 mm up to 1600 – 1600 mm in 100 mm steps A – Connection FLDN25 – Nominal width 25 FLDN40 – Nominal width 40

Example: 8-200301-0700FLDN25

Thermocouple for vacuum atmosphere, gas tight and pressure proof up to 21 bar absolute, with 2 x type S thermocouples + 1 additional empty tube for controlling measurements, a nominal length of 700 mm and a DIN EN 1092-1 flange for PN25 with a nominal width DN 25.



Vacuum thermocouple with standard flange FLDN25

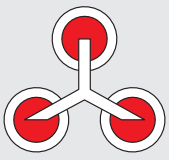


Equipped with 1 thermocouple type S (PtRh10% - Pt)

Material number	Description	Specification
92002018	Vacuum thermocouple 600 mm, 1 x type S + empty tube, flange DN 40	8-200201-0600FLDN25
92002032	Vacuum thermocouple 700 mm, 1 x type S + empty tube, flange DN 40	8-200201-0700FLDN25
92002033	Vacuum thermocouple 800 mm, 1 x type S + empty tube, flange DN 40	8-200201-0800FLDN25
92002034	Vacuum thermocouple 900 mm, 1 x type S + empty tube, flange DN 40	8-200201-0900FLDN25
92002035	Vacuum thermocouple 1000 mm, 1 x type S + empty tube, flange DN 40	8-200201-1000FLDN25
92002036	Vacuum thermocouple 1200 mm, 1 x type S + empty tube, flange DN 40	8-200201-1200FLDN25

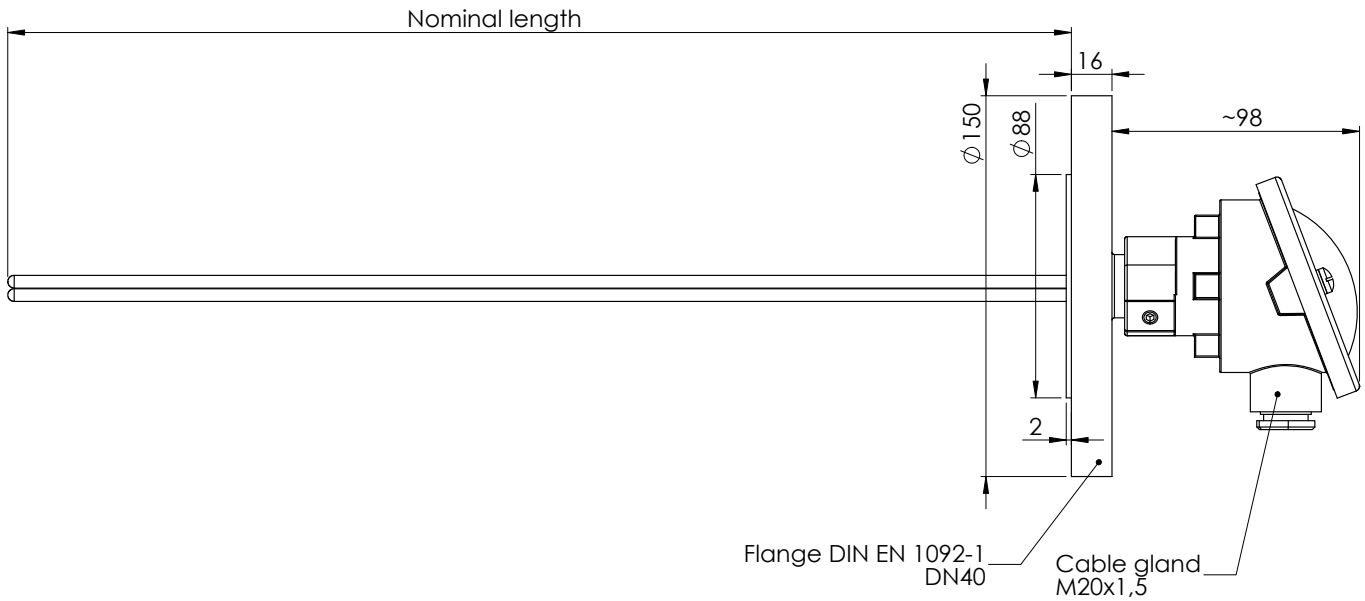
Equipped with 2 thermocouples type S (PtRh10% - Pt)

Material number	Description	Specification
92000922	Vacuum thermocouple 600 mm, 2 x type S + empty tube, flange DN25	8-200301-0600FLDN25
92000923	Vacuum thermocouple 700 mm, 2 x type S + empty tube, flange DN25	8-200301-0700FLDN25
92000924	Vacuum thermocouple 800 mm, 2 x type S + empty tube, flange DN25	8-200301-0800FLDN25
92000925	Vacuum thermocouple 900 mm, 2 x type S + empty tube, flange DN25	8-200301-0900FLDN25
92000926	Vacuum thermocouple 1000 mm, 2 x type S + empty tube, flange DN25	8-200301-1000FLDN25
92000927	Vacuum thermocouple 1200 mm, 2 x type S + empty tube, flange DN25	8-200301-1200FLDN25



Connection with standard flange DIN EN 1092-1

Vacuum thermocouple with standard flange FLDN40



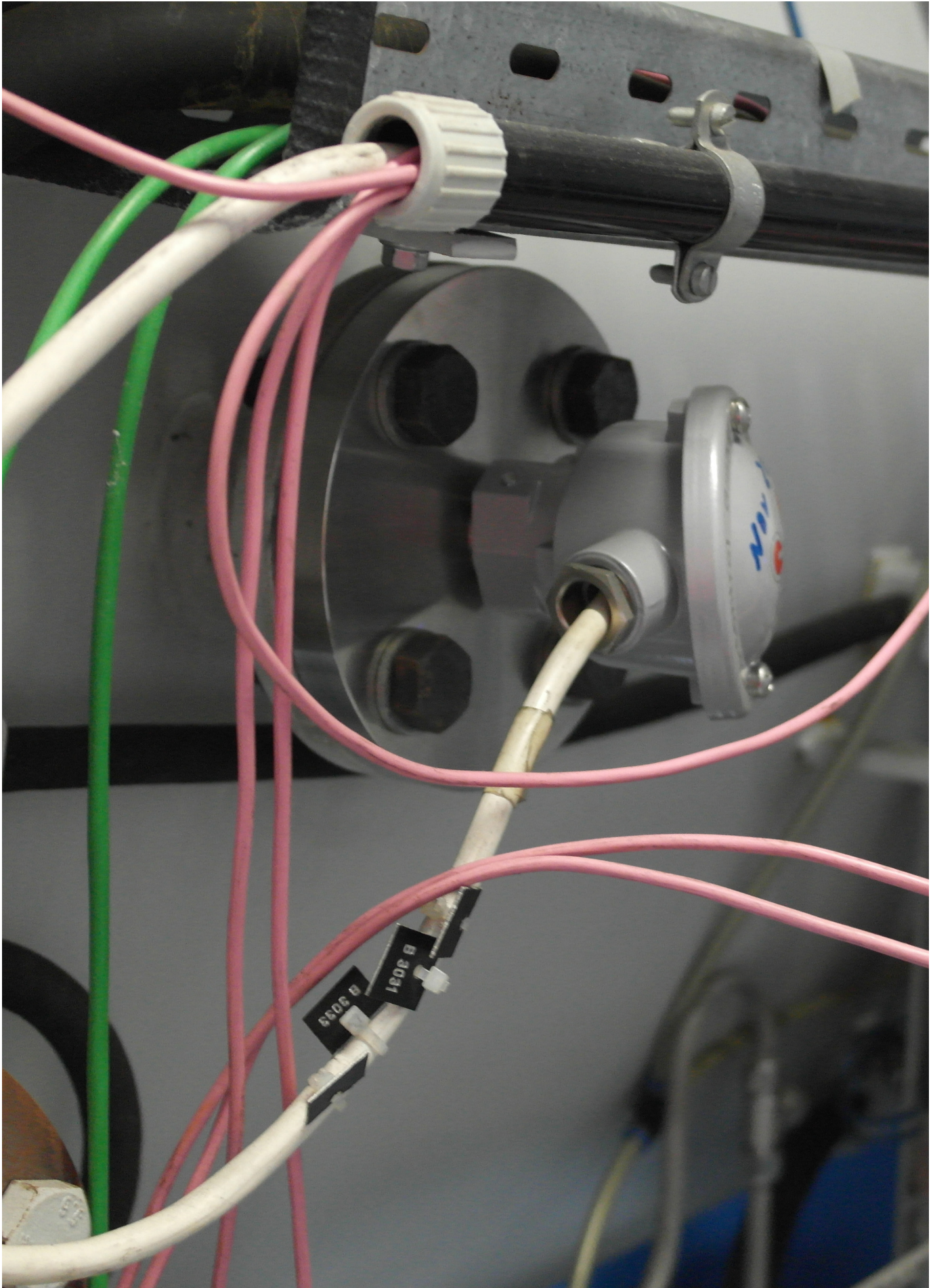
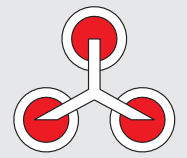
Equipped with 1 thermocouple type S (PtRh10% - Pt)

Material number	Description	Specification
92000916	Vacuum thermocouple 600 mm, 1 x type S + empty tube, flange DN 40	8-200201-0600FLDN40
92000917	Vacuum thermocouple 700 mm, 1 x type S + empty tube, flange DN 40	8-200201-0700FLDN40
92000918	Vacuum thermocouple 800 mm, 1 x type S + empty tube, flange DN 40	8-200201-0800FLDN40
92000919	Vacuum thermocouple 900 mm, 1 x type S + empty tube, flange DN 40	8-200201-0900FLDN40
92000920	Vacuum thermocouple 1000 mm, 1 x type S + empty tube, flange DN 40	8-200201-1000FLDN40
92000921	Vacuum thermocouple 1200 mm, 1 x type S + empty tube, flange DN 40	8-200201-1200FLDN40

Equipped with 2 thermocouples type S (PtRh10% - Pt)

Material number	Description	Specification
92000922	Vacuum thermocouple 600 mm, 2 x type S + empty tube, flange DN 40	8-200301-0600FLDN40
92000923	Vacuum thermocouple 700 mm, 2 x type S + empty tube, flange DN 40	8-200301-0700FLDN40
92000924	Vacuum thermocouple 800 mm, 2 x type S + empty tube, flange DN 40	8-200301-0800FLDN40
92000925	Vacuum thermocouple 900 mm, 2 x type S + empty tube, flange DN 40	8-200301-0900FLDN40
92000926	Vacuum thermocouple 1000 mm, 2 x type S + empty tube, flange DN 40	8-200301-1000FLDN40
92000927	Vacuum thermocouple 1200 mm, 2 x type S + empty tube, flange DN 40	8-200301-1200FLDN40

Connection with standard flange DIN EN 1092-1



Thermocouple for vacuum application