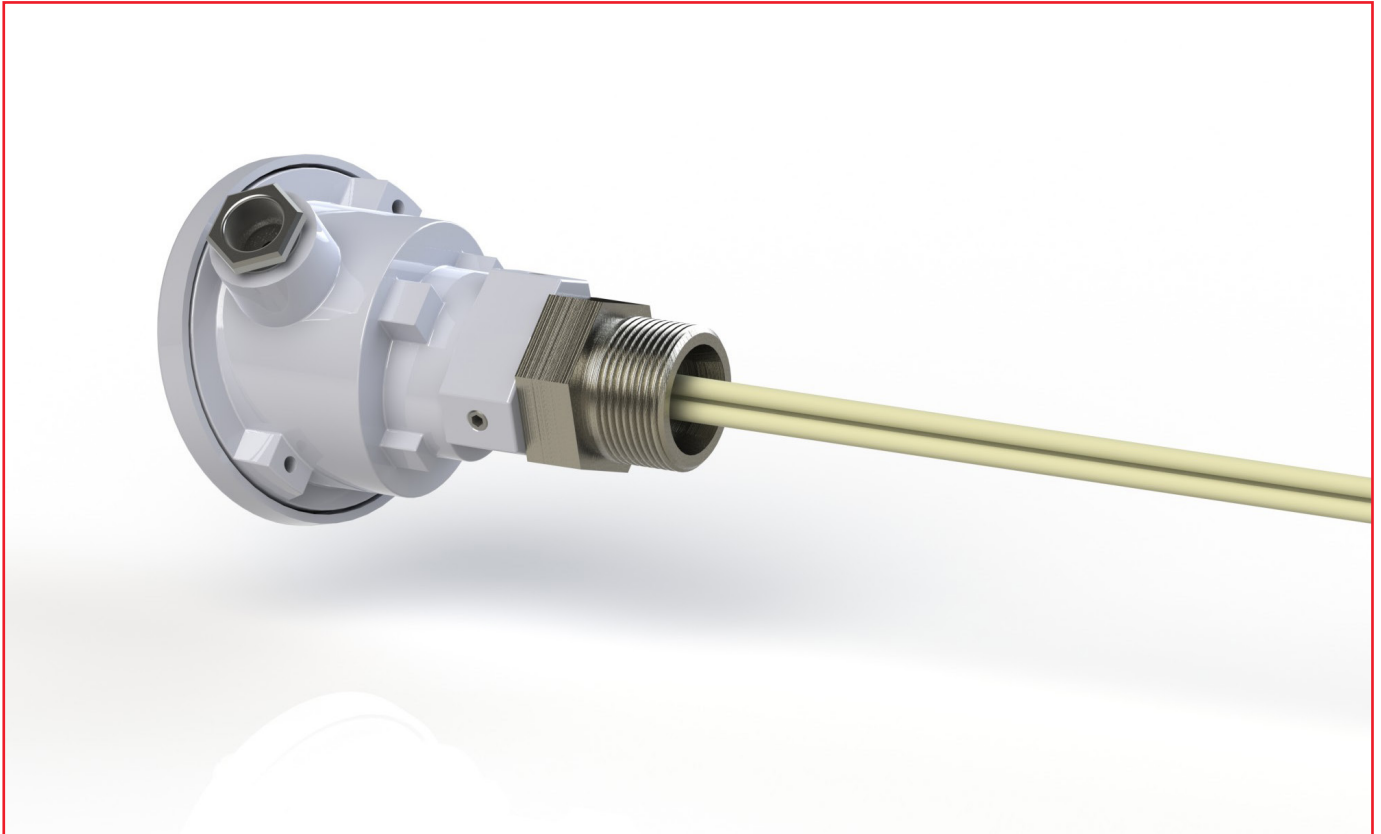


Connection with M36x2 fitting DIN 2353

Connection with M36x2 fitting DIN 2353



The type is especially developed for sites with high pressure quenching up to 20 bar.

22

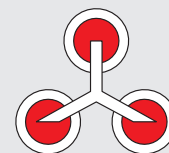
Order chart:

8	-	PPXXZZ	-	LLLLA
		PP – Pressure range vacuum tight up to 20 – 20 bar high pressure XX – Number of thermocouples (TP) 02 – 1 TP + empty tube 03 – 2 TP + empty tube 04 – 3 TP + empty tube ZZ – Alloy of thermocouple 01 – PtRh10% - Pt (type S) 02 – PtRh13% - Pt (type R) 03 – PtRh30% - PtRh16 (type B) 04 – NiCr – Ni (type K) 05 – NiCrSi – NiSi (type N)		LLLL – Nominal length [mm] 0400 – 400 mm up to 1600 – 1600 mm in 100 mm steps A – Connection SW41 – conical welding stud 24° with sleeve nut, DIN 2353

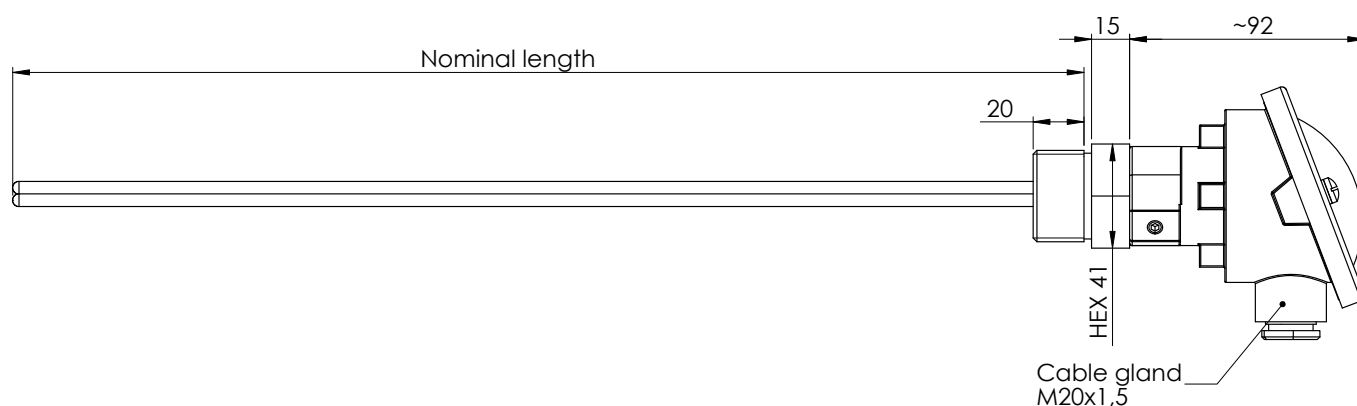
Example: 8-200301-0700SW41

Thermocouple for vacuum atmosphere, gas tight and pressure proof up to 20 bar, with 2 x type S thermocouples + 1 additional empty tube for controlling measurements, a nominal length of 700 mm, fitted on a conical welding stud 24° with M36x2 sleeve nut DIN 2353.

Connection with M36x2 fitting DIN 2353



Vacuum thermocouple with M36x2 fitting DIN2353



Equipped with 1 thermocouple type S (PtRh10% - Pt)

Material number	Description	Specification
92000928	Vacuum thermocouple 600 mm, 1 x type S + empty tube, fitting DIN2353	8-200201-0600SW41
92000929	Vacuum thermocouple 700 mm, 1 x type S + empty tube, fitting DIN2353	8-200201-0700SW41
521009	Vacuum thermocouple 800 mm, 1 x type S + empty tube, fitting DIN2353	8-200201-0800SW41
92000930	Vacuum thermocouple 900 mm, 1 x type S + empty tube, fitting DIN2353	8-200201-0900SW41
92000931	Vacuum thermocouple 1000 mm, 1 x type S + empty tube, fitting DIN2353	8-200201-1000SW41
520932	Vacuum thermocouple 1200 mm, 1 x type S + empty tube, fitting DIN2353	8-200201-1200SW41

Equipped with 2 thermocouples type S (PtRh10% - Pt)

Material number	Description	Specification
520313	Vacuum thermocouple 600 mm, 2 x type S + empty tube, fitting DIN2353	8-200301-0600SW41
520314	Vacuum thermocouple 700 mm, 2 x type S + empty tube, fitting DIN2353	8-200301-0700SW41
520315	Vacuum thermocouple 800 mm, 2 x type S + empty tube, fitting DIN2353	8-200301-0800SW41
520316	Vacuum thermocouple 900 mm, 2 x type S + empty tube, fitting DIN2353	8-200301-0900SW41
520317	Vacuum thermocouple 1000 mm, 2 x type S + empty tube, fitting DIN2353	8-200301-1000SW41
520319	Vacuum thermocouple 1200 mm, 2 x type S + empty tube, fitting DIN2353	8-200301-1200SW41

Equipped with 3 thermocouples type S (PtRh10% - Pt)

Material number	Description	Specification
92000933	Vacuum thermocouple 600 mm, 3 x type S + empty tube, fitting DIN2353	8-200401-0600SW41
92000934	Vacuum thermocouple 700 mm, 3 x type S + empty tube, fitting DIN2353	8-200401-0700SW41
92000935	Vacuum thermocouple 800 mm, 3 x type S + empty tube, fitting DIN2353	8-200401-0800SW41
92000936	Vacuum thermocouple 900 mm, 3 x type S + empty tube, fitting DIN2353	8-200401-0900SW41
92000937	Vacuum thermocouple 1000 mm, 3 x type S + empty tube, fitting DIN2353	8-200401-1000SW41
92000938	Vacuum thermocouple 1200 mm, 3 x type S + empty tube, fitting DIN2353	8-200401-1200SW41