

Stainless steel tube connection

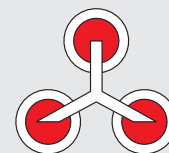
Thermocouple for vacuum application



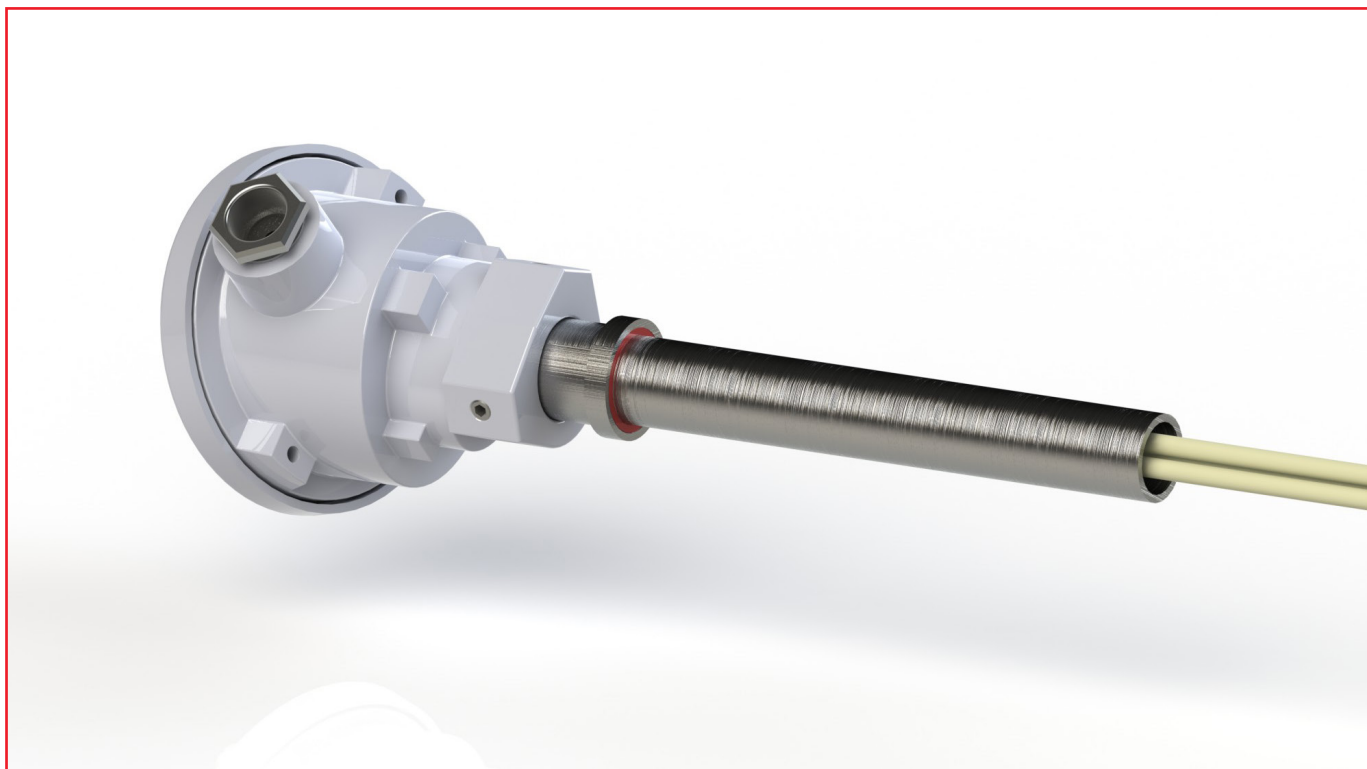
8

Standard type chart:

Pressure range	Gas-tight and pressure proof up to 20 bar
Maximum tolerated leak rate	1.0×10^{-6} mbar·l/s
Number of thermocouples [n]	1-3
Number of protective tubes	n + 1 additional empty tube for controlling measurements
Material of protective tube	High density Al_2O_3 99,7%
Diameter protective tube	5 mm
Electric connections	Ceramic insulating screws max 1,0 mm ²
Connecting head	Shape A with M20x1,5 screw connection
Certificate	Calibration certificate based on Ag and Pd benchmark measurements for PtRh – Pt types Optional calibration certificate in accordance to AMS 2750



Connection with stainless steel tube



Standard connection is a tube (W1.4305) of Ø22 mm x 150 mm length. Types with Ø 1" Zoll x 150 mm or Ø32 mm x 150 mm are also available.

Order chart:

8	-	PPXXZZ	-	LLLLA
		PP – Vacuum tight pressure proof up to 05 – 5 bar 10 – 10 bar 15 – 15 bar XX – Number of thermocouples (TP) 02 – 1 TP + empty tube 03 – 2 TP + empty tube 04 – 3 TP + empty tube ZZ – Alloy of thermocouple 01 – PtRh10% - Pt (type S) 02 – PtRh13% - Pt (type R) 03 – PtRh30% - PtRh16 (type B) 04 – NiCr – Ni (type K) 05 – NiCrSi – NiSi (type N)		LLLL – Nominal length [mm] 0400 – 400 mm up to 1600 – 1600 mm In 100 mm steps A – Connection SR22 – Ø22 mm x 150 mm

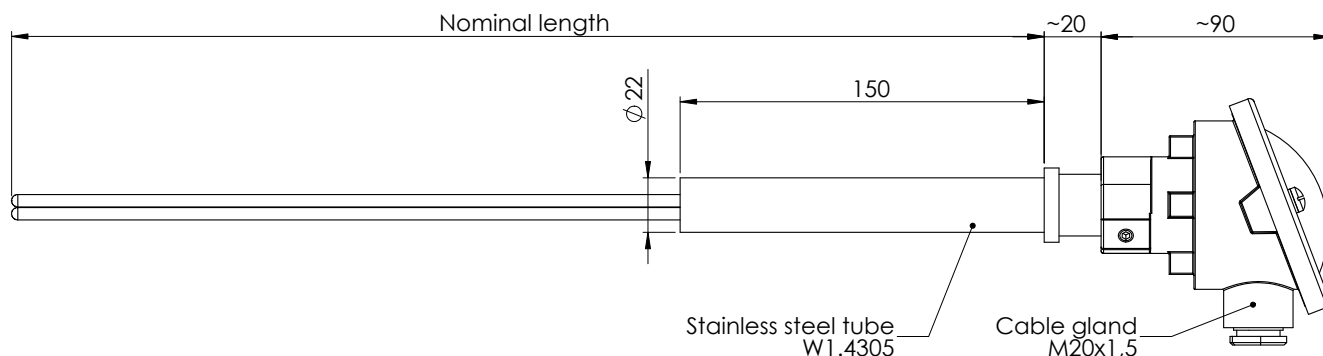
Example: 8-050301-0600SR22

Thermocouple for vacuum atmosphere, gas tight and pressure proof up to 5 bar, with 2 x type S thermocouples + 1 additional empty tube for controlling measurements, a nominal length of 600 mm and a Ø22 mm x 150 mm tube.



Connection with stainless steel tube

Vacuum thermocouple with $\varnothing 22 \times 150$ tube



Equipped with 1 thermocouple type S (PtRh10% - Pt)

Material number	Description	Specification
510225	Vacuum thermocouple 600 mm, 1 x type S + empty tube, 22 x 150 tube	8-050201-0600SR22
510226	Vacuum thermocouple 700 mm, 1 x type S + empty tube, 22 x 150 tube	8-050201-0700SR22
510227	Vacuum thermocouple 800 mm, 1 x type S + empty tube, 22 x 150 tube	8-050201-0800SR22
510228	Vacuum thermocouple 900 mm, 1 x type S + empty tube, 22 x 150 tube	8-050201-0900SR22
510229	Vacuum thermocouple 1000 mm, 1 x type S + empty tube, 22 x 150 tube	8-050201-1000SR22
510231	Vacuum thermocouple 1200 mm, 1 x type S + empty tube, 22 x 150 tube	8-050201-1200SR22

10

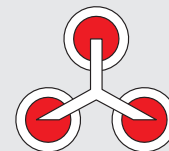
Equipped with 2 thermocouples type S (PtRh10% - Pt)

Material number	Description	Specification
510325	Vacuum thermocouple 600 mm, 2 x type S + empty tube, 22 x 150 tube	8-050301-0600SR22
510326	Vacuum thermocouple 700 mm, 2 x type S + empty tube, 22 x 150 tube	8-050301-0700SR22
510327	Vacuum thermocouple 800 mm, 2 x type S + empty tube, 22 x 150 tube	8-050301-0800SR22
510328	Vacuum thermocouple 900 mm, 2 x type S + empty tube, 22 x 150 tube	8-050301-0900SR22
510329	Vacuum thermocouple 1000 mm, 2 x type S + empty tube, 22 x 150 tube	8-050301-1000SR22
510331	Vacuum thermocouple 1200 mm, 2 x type S + empty tube, 22 x 150 tube	8-050301-1200SR22

Equipped with 3 thermocouples type S (PtRh10% - Pt)

Material number	Description	Specification
510425	Vacuum thermocouple 600 mm, 3 x type S + empty tube, 22 x 150 tube	8-050401-0600SR22
510426	Vacuum thermocouple 700 mm, 3 x type S + empty tube, 22 x 150 tube	8-050401-0700SR22
510427	Vacuum thermocouple 800 mm, 3 x type S + empty tube, 22 x 150 tube	8-050401-0800SR22
510428	Vacuum thermocouple 900 mm, 3 x type S + empty tube, 22 x 150 tube	8-050401-0900SR22
510429	Vacuum thermocouple 1000 mm, 3 x type S + empty tube, 22 x 150 tube	8-050401-1000SR22
510431	Vacuum thermocouple 1200 mm, 3 x type S + empty tube, 22 x 150 tube	8-050401-1200SR22

Connection with stainless steel tube

**Equipped with 1 thermocouple type S (PtRh10% - Pt)**

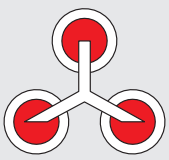
Material number	Description	Specification
510225	Vacuum thermocouple 600 mm, 1 x type S + empty tube, 22 x 150 tube	8-100201-0600SR22
510226	Vacuum thermocouple 700 mm, 1 x type S + empty tube, 22 x 150 tube	8-100201-0700SR22
510227	Vacuum thermocouple 800 mm, 1 x type S + empty tube, 22 x 150 tube	8-100201-0800SR22
510228	Vacuum thermocouple 900 mm, 1 x type S + empty tube, 22 x 150 tube	8-100201-0900SR22
510229	Vacuum thermocouple 1000 mm, 1 x type S + empty tube, 22 x 150 tube	8-100201-1000SR22
510231	Vacuum thermocouple 1200 mm, 1 x type S + empty tube, 22 x 150 tube	8-100201-1200SR22

Equipped with 2 thermocouples type S (PtRh10% - Pt)

Material number	Description	Specification
510325	Vacuum thermocouple 600 mm, 2 x type S + empty tube, 22 x 150 tube	8-100301-0600SR22
510326	Vacuum thermocouple 700 mm, 2 x type S + empty tube, 22 x 150 tube	8-100301-0700SR22
510327	Vacuum thermocouple 800 mm, 2 x type S + empty tube, 22 x 150 tube	8-100301-0800SR22
510328	Vacuum thermocouple 900 mm, 2 x type S + empty tube, 22 x 150 tube	8-100301-0900SR22
510329	Vacuum thermocouple 1000 mm, 2 x type S + empty tube, 22 x 150 tube	8-100301-1000SR22
510331	Vacuum thermocouple 1200 mm, 2 x type S + empty tube, 22 x 150 tube	8-100301-1200SR22

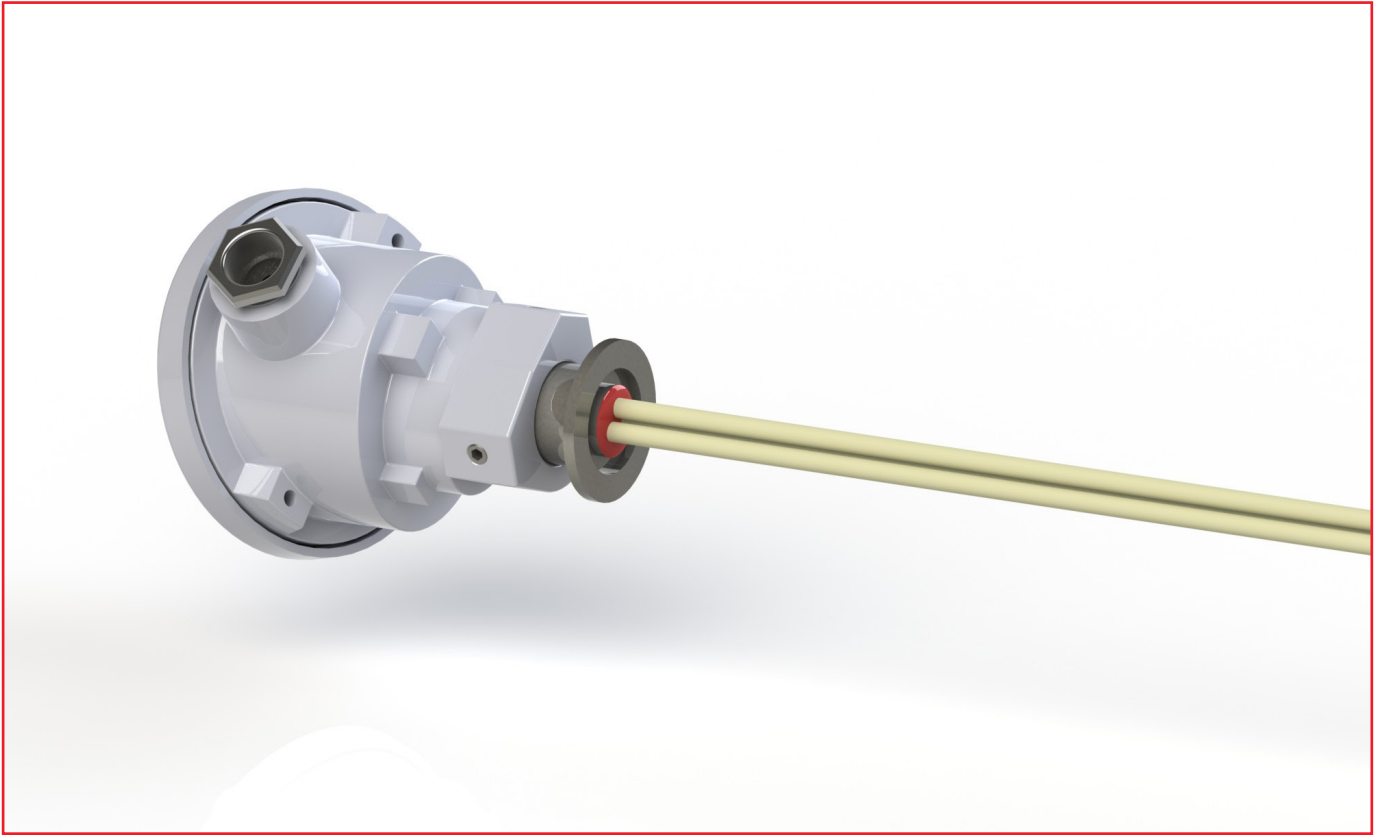
Equipped with 3 thermocouples type S (PtRh10% - Pt)

Material number	Description	Specification
9200093	Vacuum thermocouple 600 mm, 3 x type S + empty tube, 22 x 150 tube	8-100401-0600SR22
92001411	Vacuum thermocouple 700 mm, 3 x type S + empty tube, 22 x 150 tube	8-100401-0700SR22
92001412	Vacuum thermocouple 800 mm, 3 x type S + empty tube, 22 x 150 tube	8-100401-0800SR22
92000101	Vacuum thermocouple 900 mm, 3 x type S + empty tube, 22 x 150 tube	8-100401-0900SR22
92001413	Vacuum thermocouple 1000 mm, 3 x type S + empty tube, 22 x 150 tube	8-100401-1000SR22
92000102	Vacuum thermocouple 1200 mm, 3 x type S + empty tube, 22 x 150 tube	8-100401-1200SR22



Connection with small flange

Connection with small flange



Standard connection is a small flange ISO 2861 DN 25. Types with DN 16 and DN40 are also available.

12

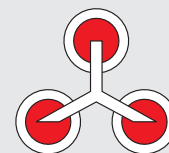
Order chart:

8	-	<i>PPXXZZ</i>	-	<i>LLLLA</i>
		PP – Vacuum tight pressure proof up to 05 – 5 bar 10 – 10 bar XX – Number of thermocouples (TP) 02 – 1 TP + empty tube 03 – 2 TP + empty tube 04 – 3 TP + empty tube ZZ – Alloy of thermocouple 01 – PtRh10% - Pt (type S) 02 – PtRh13% - Pt (type R) 03 – PtRh30% - PtRh16 (type B) 04 – NiCr – Ni (type K) 05 – NiCrSi – NiSi (type N)		LLLL – Nominal length [mm] 0400 – 400 mm up to 1600 – 1600 mm in 100 mm steps A – Connection KF16 – small flange DN16 KF25 – small flange DN25 KF40 – small flange DN40

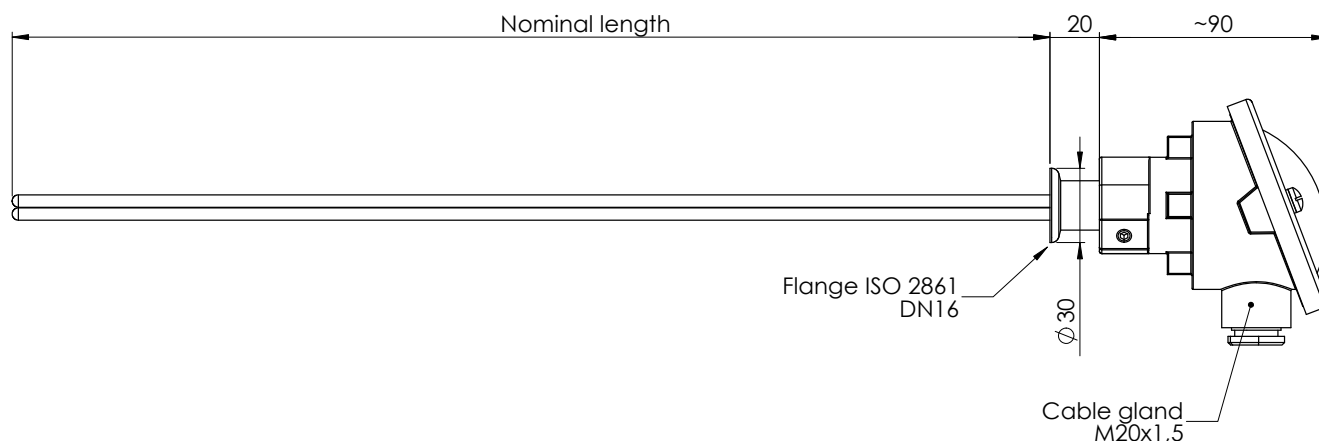
Example: 8-050301-0700KF25

Thermocouple for vacuum atmosphere, gas tight and pressure proof up to 5 bar, with 2 x type S thermocouples + 1 additional empty tube for controlling measurements, a nominal length of 700 mm and a small flange connection ISO 2861 DN 25.

Connection with small flange



Vacuum thermocouple with small flange DN 16

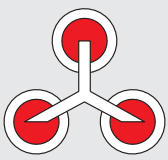


Equipped with 1 thermocouple type S (PtRh10% - Pt)

Material number	Description	Specification
92000876	Vacuum thermocouple 600 mm, 1 x type S + empty tube, small flange DN 16	8-050201-0600KF16
92000877	Vacuum thermocouple 700 mm, 1 x type S + empty tube, small flange DN 16	8-050201-0700KF16
92000881	Vacuum thermocouple 800 mm, 1 x type S + empty tube, small flange DN 16	8-050201-0800KF16
92000882	Vacuum thermocouple 900 mm, 1 x type S + empty tube, small flange DN 16	8-050201-0900KF16
92000883	Vacuum thermocouple 1000 mm, 1 x type S + empty tube, small flange DN 16	8-050201-1000KF16
92000884	Vacuum thermocouple 1200 mm, 1 x type S + empty tube, small flange DN 16	8-050201-1200KF16

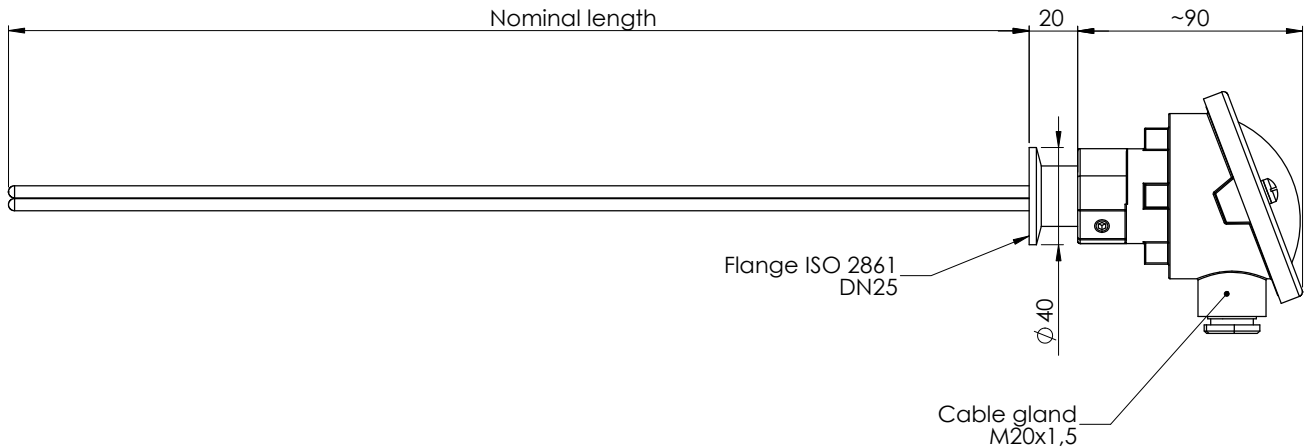
Equipped with 2 thermocouples type S (PtRh10% - Pt)

Material number	Description	Specification
92000892	Vacuum thermocouple 600 mm, 2 x type S + empty tube, small flange DN 16	8-050301-0600KF16
92000893	Vacuum thermocouple 700 mm, 2 x type S + empty tube, small flange DN 16	8-050301-0700KF16
92000894	Vacuum thermocouple 800 mm, 2 x type S + empty tube, small flange DN 16	8-050301-0800KF16
92000895	Vacuum thermocouple 900 mm, 2 x type S + empty tube, small flange DN 16	8-050301-0900KF16
92000896	Vacuum thermocouple 1000 mm, 2 x type S + empty tube, small flange DN 16	8-050301-1000KF16
92000897	Vacuum thermocouple 1200 mm, 2 x type S + empty tube, small flange DN 16	8-050301-1200KF16



Connection with small flange

Vacuum thermocouple with small flange DN 25



Equipped with 1 thermocouple type S (PtRh10% - Pt)

Material number	Description	Specification
510213	Vacuum thermocouple 600 mm, 1 x type S + empty tube, small flange DN 25	8-050201-0600KF25
510214	Vacuum thermocouple 700 mm, 1 x type S + empty tube, small flange DN 25	8-050201-0700KF25
510215	Vacuum thermocouple 800 mm, 1 x type S + empty tube, small flange DN 25	8-050201-0800KF25
510216	Vacuum thermocouple 900 mm, 1 x type S + empty tube, small flange DN 25	8-050201-0900KF25
510217	Vacuum thermocouple 1000 mm, 1 x type S + empty tube, small flange DN 25	8-050201-1000KF25
510219	Vacuum thermocouple 1200 mm, 1 x type S + empty tube, small flange DN 25	8-050201-1200KF25

14

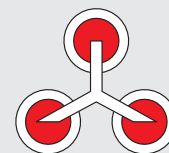
Equipped with 2 thermocouples type S (PtRh10% - Pt)

Material number	Description	Specification
510313	Vacuum thermocouple 600 mm, 2 x type S + empty tube, small flange DN 25	8-050301-0600KF25
510314	Vacuum thermocouple 700 mm, 2 x type S + empty tube, small flange DN 25	8-050301-0700KF25
510315	Vacuum thermocouple 800 mm, 2 x type S + empty tube, small flange DN 25	8-050301-0800KF25
510316	Vacuum thermocouple 900 mm, 2 x type S + empty tube, small flange DN 25	8-050301-0900KF25
510317	Vacuum thermocouple 1000 mm, 2 x type S + empty tube, small flange DN 25	8-050301-1000KF25
510319	Vacuum thermocouple 1200 mm, 2 x type S + empty tube, small flange DN 25	8-050301-1200KF25

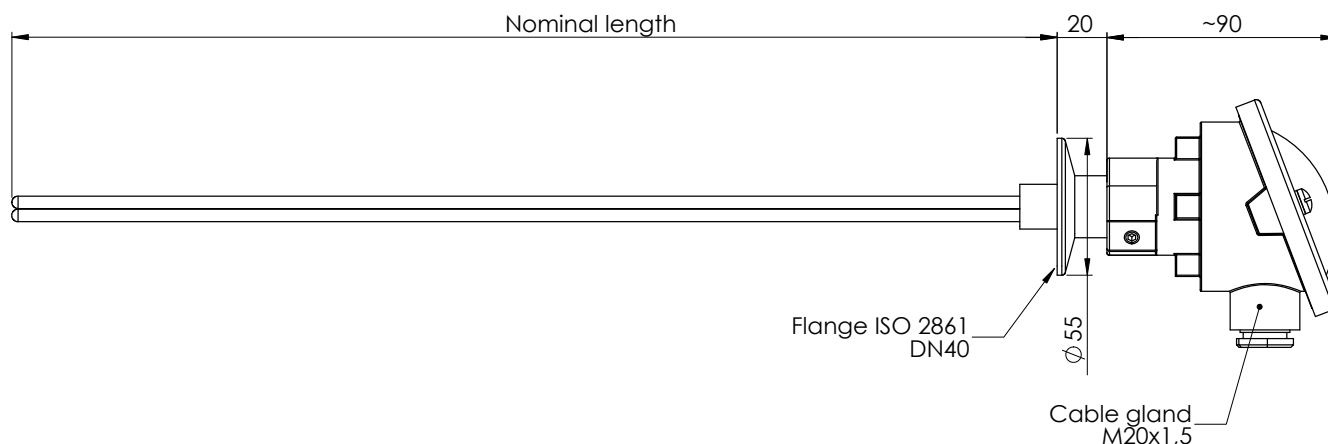
Equipped with 3 thermocouples type S (PtRh10% - Pt)

Material number	Description	Specification
510413	Vacuum thermocouple 600 mm, 3 x type S + empty tube, small flange DN 25	8-050401-0600KF25
510414	Vacuum thermocouple 700 mm, 3 x type S + empty tube, small flange DN 25	8-050401-0700KF25
510415	Vacuum thermocouple 800 mm, 3 x type S + empty tube, small flange DN 25	8-050401-0800KF25
510416	Vacuum thermocouple 900 mm, 3 x type S + empty tube, small flange DN 25	8-050401-0900KF25
510417	Vacuum thermocouple 1000 mm, 3 x type S + empty tube, small flange DN 25	8-050401-1000KF25
510419	Vacuum thermocouple 1200 mm, 3 x type S + empty tube, small flange DN 25	8-050401-1200KF25

Connection with small flange



Vacuum thermocouple with small flange DN 40



Equipped with 1 thermocouple type S (PtRh10% - Pt)

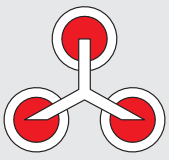
Material number	Description	Specification
92000885	Vacuum thermocouple 600 mm, 1 x type S + empty tube, small flange DN 40	8-050201-0600KF40
92000886	Vacuum thermocouple 700 mm, 1 x type S + empty tube, small flange DN 40	8-050201-0700KF40
92000887	Vacuum thermocouple 800 mm, 1 x type S + empty tube, small flange DN 40	8-050201-0800KF40
92000888	Vacuum thermocouple 900 mm, 1 x type S + empty tube, small flange DN 40	8-050201-0900KF40
92000890	Vacuum thermocouple 1000 mm, 1 x type S + empty tube, small flange DN 40	8-050201-1000KF40
92000891	Vacuum thermocouple 1200 mm, 1 x type S + empty tube, small flange DN 40	8-050201-1200KF40

Equipped with 2 thermocouples type S (PtRh10% - Pt)

Material number	Description	Specification
92000898	Vacuum thermocouple 600 mm, 2 x type S + empty tube, small flange DN 40	8-050301-0600KF40
92000899	Vacuum thermocouple 700 mm, 2 x type S + empty tube, small flange DN 40	8-050301-0700KF40
92000900	Vacuum thermocouple 800 mm, 2 x type S + empty tube, small flange DN 40	8-050301-0800KF40
92000901	Vacuum thermocouple 900 mm, 2 x type S + empty tube, small flange DN 40	8-050301-0900KF40
92000902	Vacuum thermocouple 1000 mm, 2 x type S + empty tube, small flange DN 40	8-050301-1000KF40
92000903	Vacuum thermocouple 1200 mm, 2 x type S + empty tube, small flange DN 40	8-050301-1200KF40

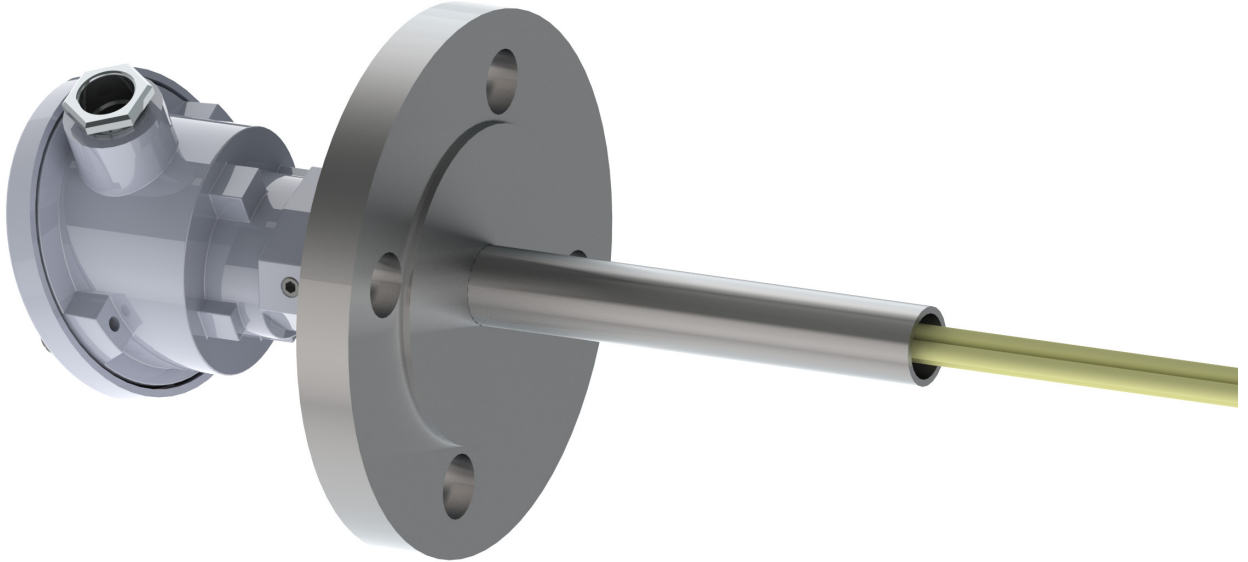
Equipped with 3 thermocouples type S (PtRh10% - Pt)

Material number	Description	Specification
92000910	Vacuum thermocouple 600 mm, 3 x type S + empty tube, small flange DN 40	8-050401-0600KF40
92000911	Vacuum thermocouple 700 mm, 3 x type S + empty tube, small flange DN 40	8-050401-0700KF40
92000912	Vacuum thermocouple 800 mm, 3 x type S + empty tube, small flange DN 40	8-050401-0800KF40
92000913	Vacuum thermocouple 900 mm, 3 x type S + empty tube, small flange DN 40	8-050401-0900KF40
92000914	Vacuum thermocouple 1000 mm, 3 x type S + empty tube, small flange DN 40	8-050401-1000KF40
92000915	Vacuum thermocouple 1200 mm, 3 x type S + empty tube, small flange DN 40	8-050401-1200KF40



Connection with standard flange DIN EN 1092-1

Connection with standard flange DIN EN 1092-1



16

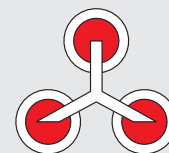
The type is also used for applications up to 21 bar high pressure or in hydrogen atmospheres. Standard connection is a flange DIN EN 1092-1 with a nominal width DN25 PN25. Further nominal widths and types, for example with notch, are available on request.

Order chart:

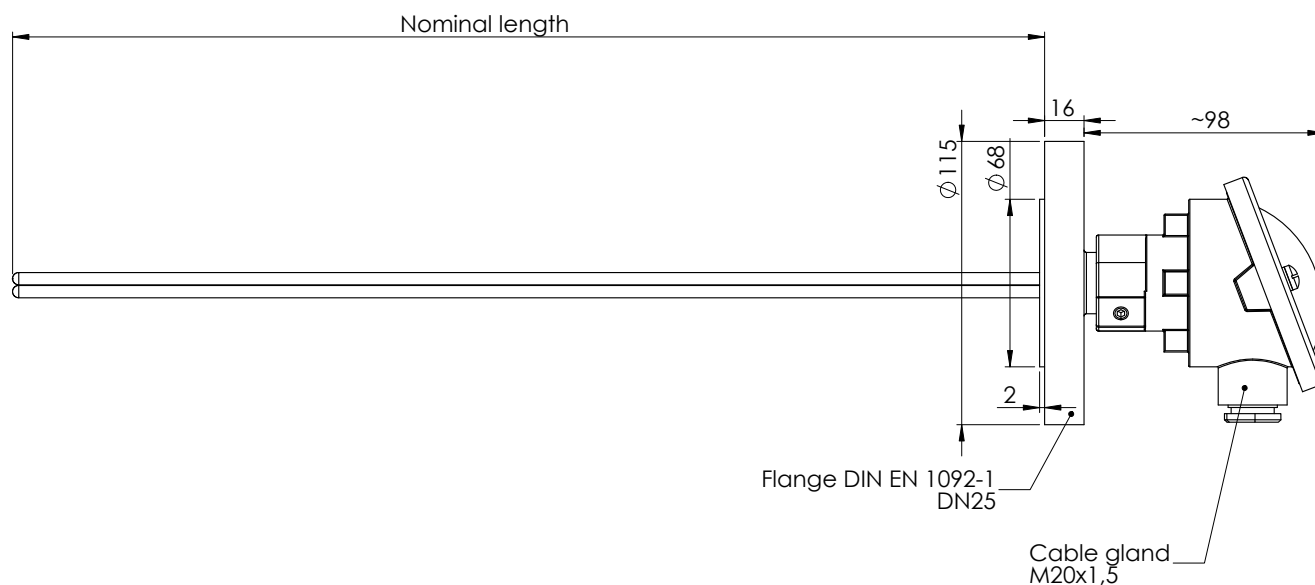
8	-	PPXXZZ	-	LLLLA
		PP – Vacuum tight pressure proof up to 20 – 20 bar XX – Number of thermocouples (TP) 02 – 1 TP + empty tube 03 – 2 TP + empty tube ZZ – Alloy of thermocouple 01 – PtRh10% - Pt (type S) 02 – PtRh13% - Pt (type R) 03 – PtRh30% - PtRh16 (type B) 05 – NiCrSi – NiSi (type N)		LLLL – Nominal length [mm] 0400 – 400 mm up to 1600 – 1600 mm in 100 mm steps A – Connection FLDN25 – Nominal width 25 FLDN40 – Nominal width 40

Example: 8-200301-0700FLDN25

Thermocouple for vacuum atmosphere, gas tight and pressure proof up to 21 bar absolute, with 2 x type S thermocouples + 1 additional empty tube for controlling measurements, a nominal length of 700 mm and a DIN EN 1092-1 flange for PN25 with a nominal width DN 25.



Vacuum thermocouple with standard flange FLDN25

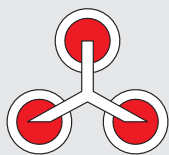


Equipped with 1 thermocouple type S (PtRh10% - Pt)

Material number	Description	Specification
92002018	Vacuum thermocouple 600 mm, 1 x type S + empty tube, flange DN 40	8-200201-0600FLDN25
92002032	Vacuum thermocouple 700 mm, 1 x type S + empty tube, flange DN 40	8-200201-0700FLDN25
92002033	Vacuum thermocouple 800 mm, 1 x type S + empty tube, flange DN 40	8-200201-0800FLDN25
92002034	Vacuum thermocouple 900 mm, 1 x type S + empty tube, flange DN 40	8-200201-0900FLDN25
92002035	Vacuum thermocouple 1000 mm, 1 x type S + empty tube, flange DN 40	8-200201-1000FLDN25
92002036	Vacuum thermocouple 1200 mm, 1 x type S + empty tube, flange DN 40	8-200201-1200FLDN25

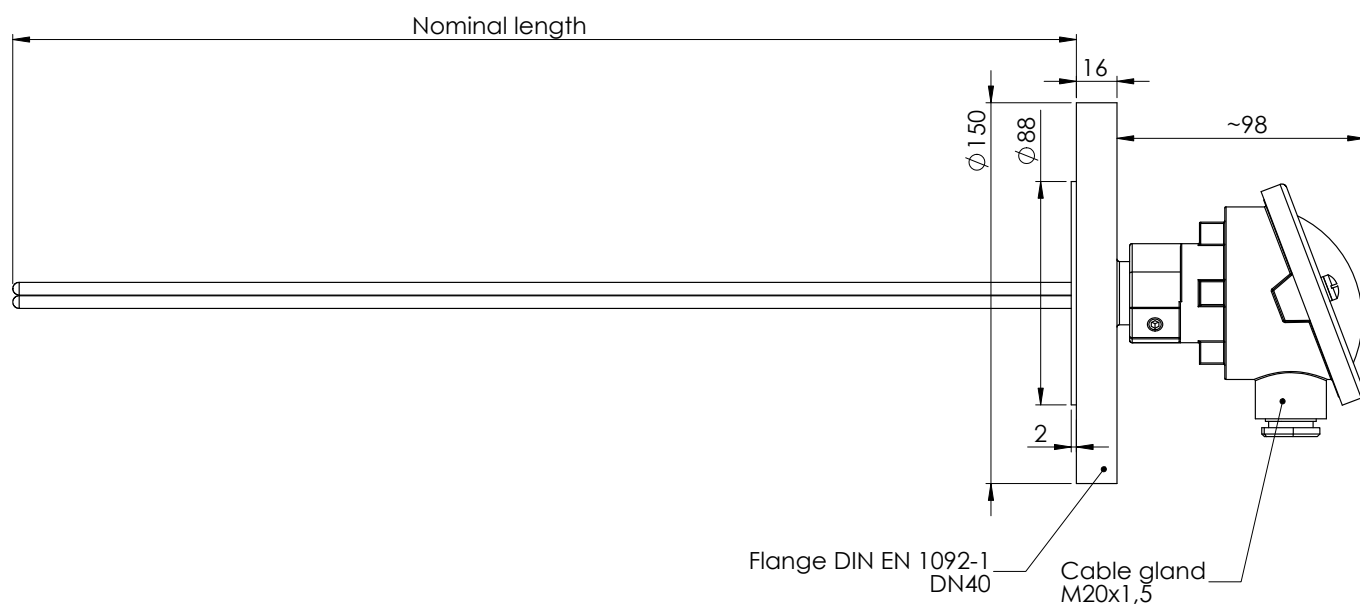
Equipped with 2 thermocouples type S (PtRh10% - Pt)

Material number	Description	Specification
92000922	Vacuum thermocouple 600 mm, 2 x type S + empty tube, flange DN25	8-200301-0600FLDN25
92000923	Vacuum thermocouple 700 mm, 2 x type S + empty tube, flange DN25	8-200301-0700FLDN25
92000924	Vacuum thermocouple 800 mm, 2 x type S + empty tube, flange DN25	8-200301-0800FLDN25
92000925	Vacuum thermocouple 900 mm, 2 x type S + empty tube, flange DN25	8-200301-0900FLDN25
92000926	Vacuum thermocouple 1000 mm, 2 x type S + empty tube, flange DN25	8-200301-1000FLDN25
92000927	Vacuum thermocouple 1200 mm, 2 x type S + empty tube, flange DN25	8-200301-1200FLDN25



Connection with standard flange DIN EN 1092-1

Vacuum thermocouple with standard flange FLDN40



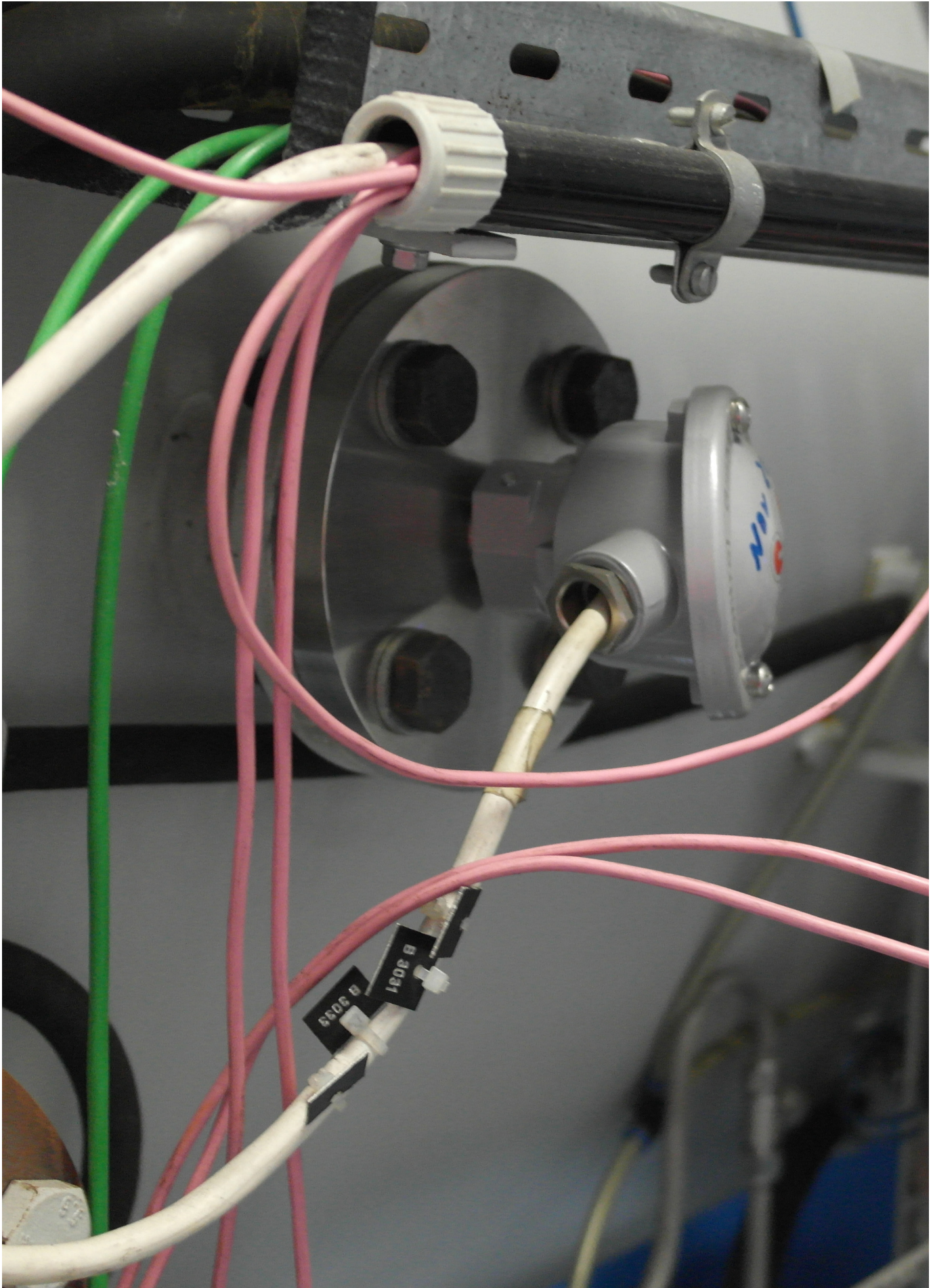
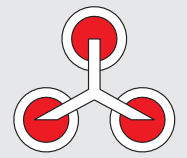
Equipped with 1 thermocouple type S (PtRh10% - Pt)

Material number	Description	Specification
92000916	Vacuum thermocouple 600 mm, 1 x type S + empty tube, flange DN 40	8-200201-0600FLDN40
92000917	Vacuum thermocouple 700 mm, 1 x type S + empty tube, flange DN 40	8-200201-0700FLDN40
92000918	Vacuum thermocouple 800 mm, 1 x type S + empty tube, flange DN 40	8-200201-0800FLDN40
92000919	Vacuum thermocouple 900 mm, 1 x type S + empty tube, flange DN 40	8-200201-0900FLDN40
92000920	Vacuum thermocouple 1000 mm, 1 x type S + empty tube, flange DN 40	8-200201-1000FLDN40
92000921	Vacuum thermocouple 1200 mm, 1 x type S + empty tube, flange DN 40	8-200201-1200FLDN40

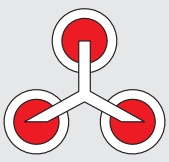
Equipped with 2 thermocouples type S (PtRh10% - Pt)

Material number	Description	Specification
92000922	Vacuum thermocouple 600 mm, 2 x type S + empty tube, flange DN 40	8-200301-0600FLDN40
92000923	Vacuum thermocouple 700 mm, 2 x type S + empty tube, flange DN 40	8-200301-0700FLDN40
92000924	Vacuum thermocouple 800 mm, 2 x type S + empty tube, flange DN 40	8-200301-0800FLDN40
92000925	Vacuum thermocouple 900 mm, 2 x type S + empty tube, flange DN 40	8-200301-0900FLDN40
92000926	Vacuum thermocouple 1000 mm, 2 x type S + empty tube, flange DN 40	8-200301-1000FLDN40
92000927	Vacuum thermocouple 1200 mm, 2 x type S + empty tube, flange DN 40	8-200301-1200FLDN40

Connection with standard flange DIN EN 1092-1

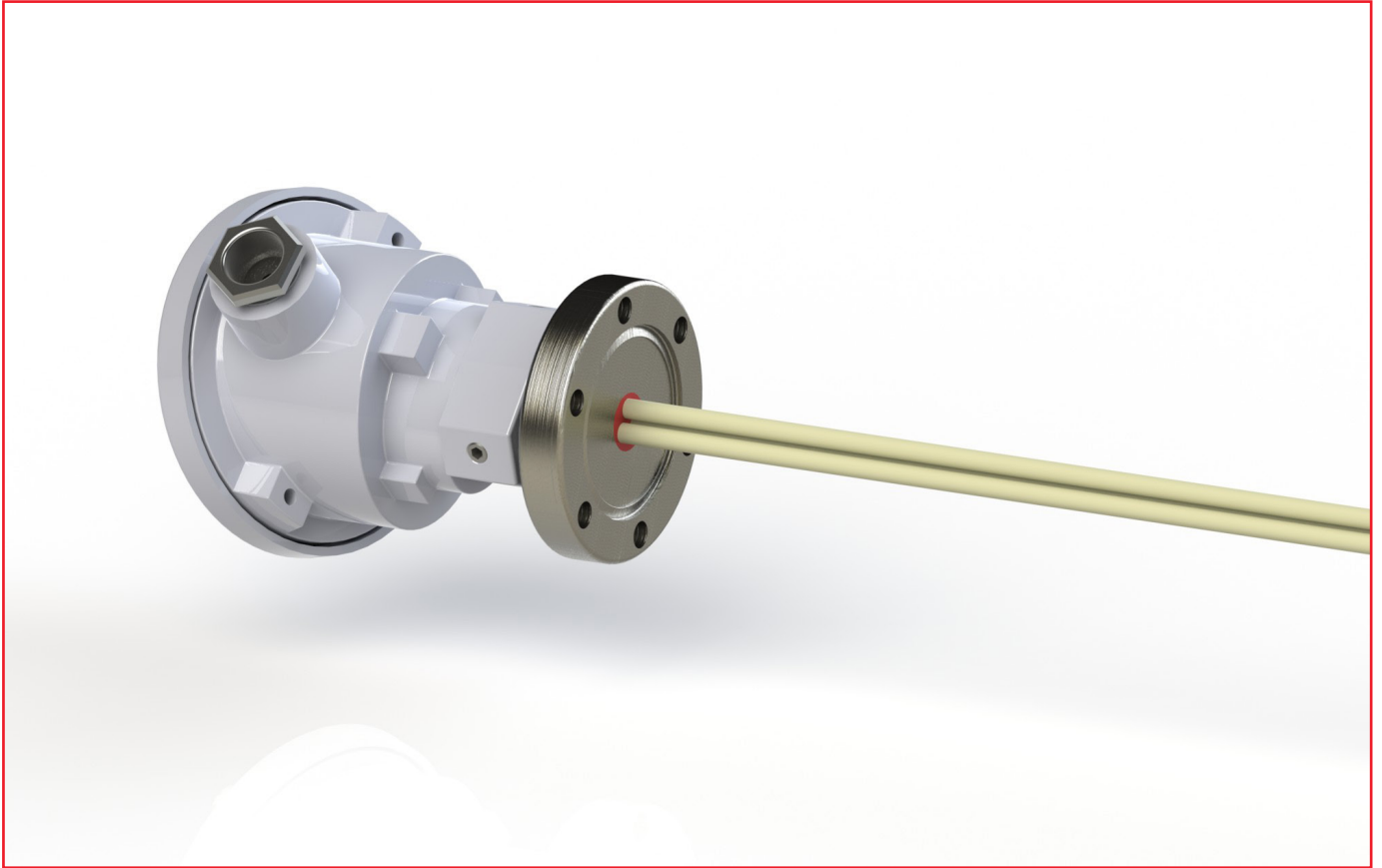


Thermocouple for vacuum application



Connection with CF-flange

Connection with CF-flange



The high vacuum type has a maximum admissible leak rate of $1.0 \cdot 10^{-8}$ mbar · l/s. Standard width is the nominal width DN 40. Further nominal widths are available on request.

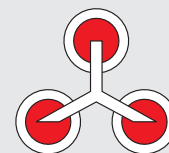
Order chart:

8	-	PPXXZZ	-	LLLLA
		PP – Pressure range vacuum tight up to 05 – 5 bar high pressure XX – Number of thermocouples (TP) 02 – 1 TP + empty tube 03 – 2 TP + empty tube 04 – 3 TP + empty tube ZZ – Alloy of thermocouple 01 – PtRh10% - Pt (type S) 02 – PtRh13% - Pt (type R) 03 – PtRh30% - PtRh16 (type B) 04 – NiCr – Ni (type K) 05 – NiCrSi – NiSi (type N)		LLLL – Nominal length [mm] 0400 – 400 mm up to 1600 – 1600 mm in 100 mm steps A – Connection CF40 – nominal width DN40

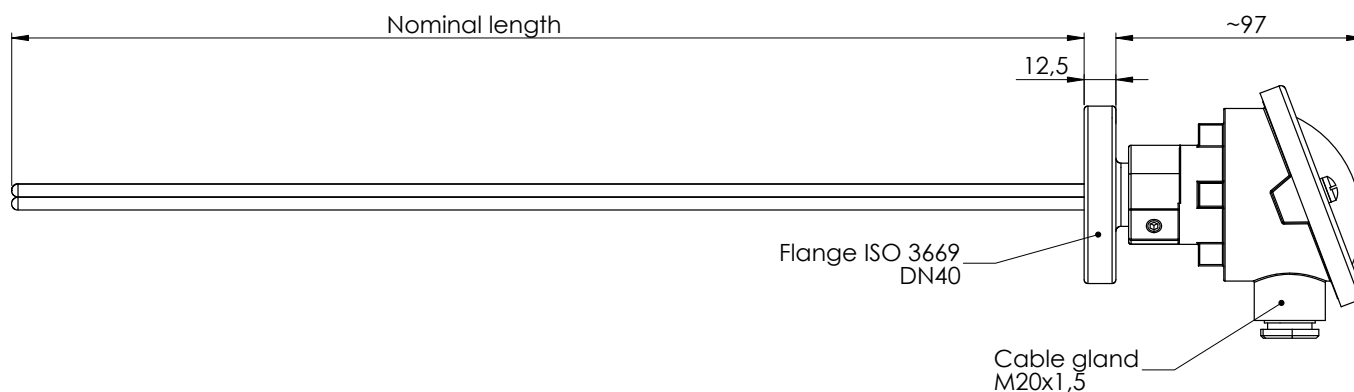
Example: 8-050301-0700CF40

Thermocouple for vacuum atmosphere, gas tight and pressure proof up to 5 bar, with 2 x type S thermocouples + 1 additional empty tube for controlling measurements, a nominal length of 700 mm and a CF-flange with the nominal width DN 40.

Connection with CF-flange



Vacuum thermocouple with CF-flange

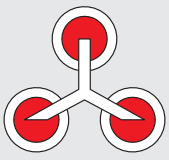


Equipped with 1 thermocouple type S (PtRh10% - Pt)

Material number	Description	Specification
92000916	Vacuum thermocouple 600 mm, 1 x type S + empty tube, CF-flange DN 40	8-050201-0600CF40
92000917	Vacuum thermocouple 700 mm, 1 x type S + empty tube, CF-flange DN 40	8-050201-0700CF40
92000918	Vacuum thermocouple 800 mm, 1 x type S + empty tube, CF-flange DN 40	8-050201-0800CF40
92000919	Vacuum thermocouple 900 mm, 1 x type S + empty tube, CF-flange DN 40	8-050201-0900CF40
92000920	Vacuum thermocouple 1000 mm, 1 x type S + empty tube, CF-flange DN 40	8-050201-1000CF40
92000921	Vacuum thermocouple 1200 mm, 1 x type S + empty tube, CF-flange DN 40	8-050201-1200CF40

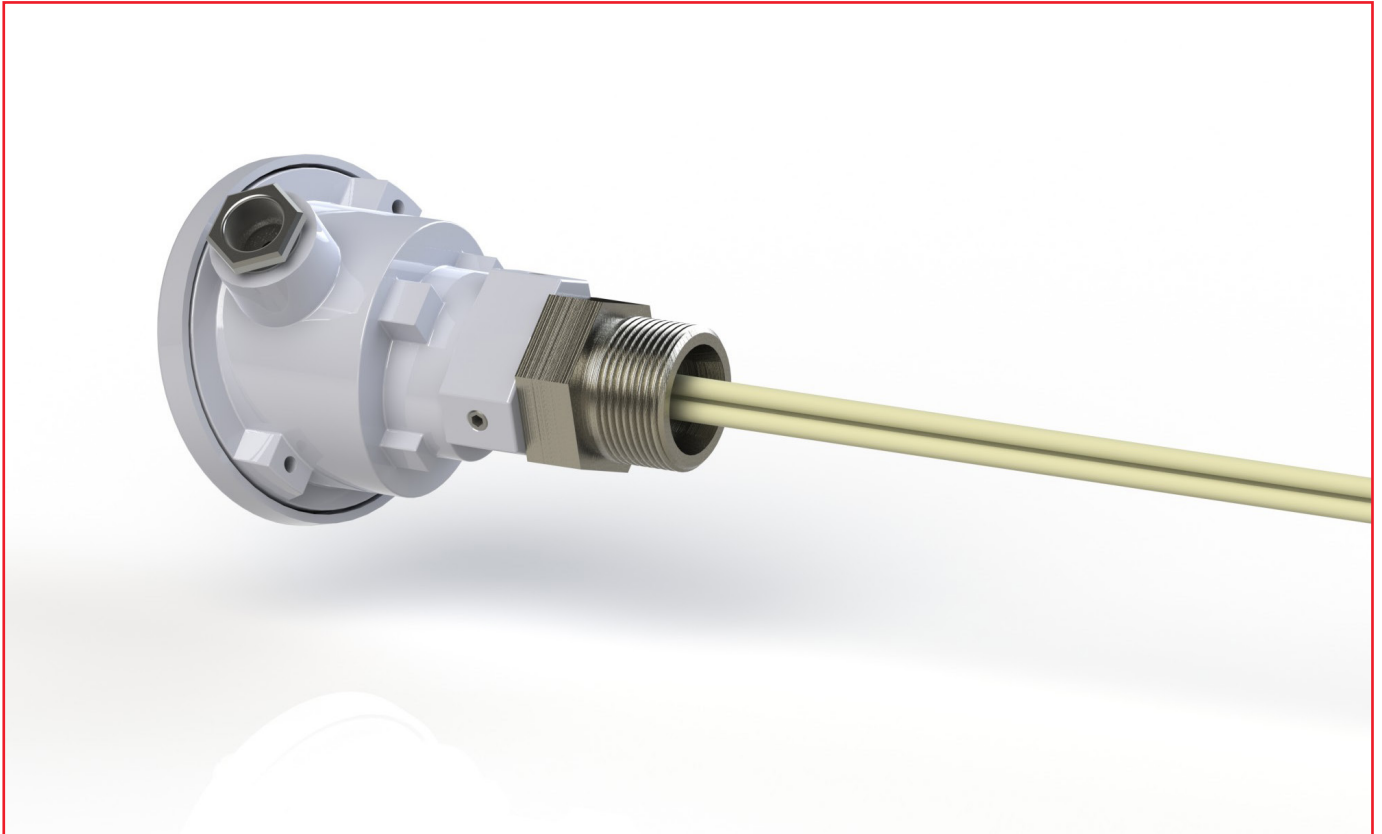
Equipped with 2 thermocouples type S (PtRh10% - Pt)

Material number	Description	Specification
92000922	Vacuum thermocouple 600 mm, 2 x type S + empty tube, CF-flange DN 40	8-050301-0600CF40
92000923	Vacuum thermocouple 700 mm, 2 x type S + empty tube, CF-flange DN 40	8-050301-0700CF40
92000924	Vacuum thermocouple 800 mm, 2 x type S + empty tube, CF-flange DN 40	8-050301-0800CF40
92000925	Vacuum thermocouple 900 mm, 2 x type S + empty tube, CF-flange DN 40	8-050301-0900CF40
92000926	Vacuum thermocouple 1000 mm, 2 x type S + empty tube, CF-flange DN 40	8-050301-1000CF40
92000927	Vacuum thermocouple 1200 mm, 2 x type S + empty tube, CF-flange DN 40	8-050301-1200CF40



Connection with M36x2 fitting DIN 2353

Connection with M36x2 fitting DIN 2353



The type is especially developed for sites with high pressure quenching up to 20 bar.

22

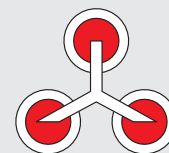
Order chart:

8	-	PPXXZZ	-	LLLLA
		PP – Pressure range vacuum tight up to 20 – 20 bar high pressure XX – Number of thermocouples (TP) 02 – 1 TP + empty tube 03 – 2 TP + empty tube 04 – 3 TP + empty tube ZZ – Alloy of thermocouple 01 – PtRh10% - Pt (type S) 02 – PtRh13% - Pt (type R) 03 – PtRh30% - PtRh16 (type B) 04 – NiCr – Ni (type K) 05 – NiCrSi – NiSi (type N)		LLLL – Nominal length [mm] 0400 – 400 mm up to 1600 – 1600 mm in 100 mm steps A – Connection SW41 – conical welding stud 24° with sleeve nut, DIN 2353

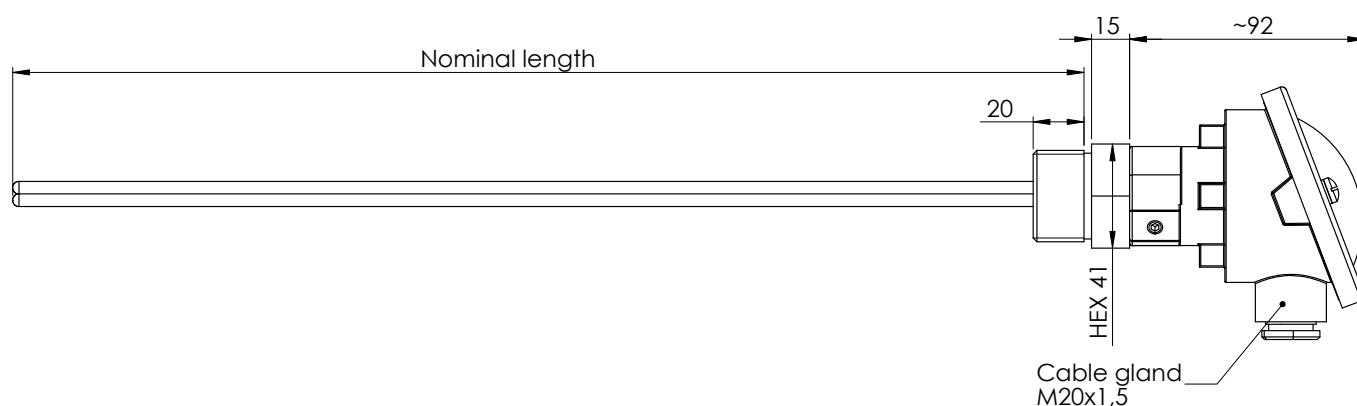
Example: 8-200301-0700SW41

Thermocouple for vacuum atmosphere, gas tight and pressure proof up to 20 bar, with 2 x type S thermocouples + 1 additional empty tube for controlling measurements, a nominal length of 700 mm, fitted on a conical welding stud 24° with M36x2 sleeve nut DIN 2353.

Connection with M36x2 fitting DIN 2353



Vacuum thermocouple with M36x2 fitting DIN2353



Equipped with 1 thermocouple type S (PtRh10% - Pt)

Material number	Description	Specification
92000928	Vacuum thermocouple 600 mm, 1 x type S + empty tube, fitting DIN2353	8-200201-0600SW41
92000929	Vacuum thermocouple 700 mm, 1 x type S + empty tube, fitting DIN2353	8-200201-0700SW41
521009	Vacuum thermocouple 800 mm, 1 x type S + empty tube, fitting DIN2353	8-200201-0800SW41
92000930	Vacuum thermocouple 900 mm, 1 x type S + empty tube, fitting DIN2353	8-200201-0900SW41
92000931	Vacuum thermocouple 1000 mm, 1 x type S + empty tube, fitting DIN2353	8-200201-1000SW41
520932	Vacuum thermocouple 1200 mm, 1 x type S + empty tube, fitting DIN2353	8-200201-1200SW41

Equipped with 2 thermocouples type S (PtRh10% - Pt)

Material number	Description	Specification
520313	Vacuum thermocouple 600 mm, 2 x type S + empty tube, fitting DIN2353	8-200301-0600SW41
520314	Vacuum thermocouple 700 mm, 2 x type S + empty tube, fitting DIN2353	8-200301-0700SW41
520315	Vacuum thermocouple 800 mm, 2 x type S + empty tube, fitting DIN2353	8-200301-0800SW41
520316	Vacuum thermocouple 900 mm, 2 x type S + empty tube, fitting DIN2353	8-200301-0900SW41
520317	Vacuum thermocouple 1000 mm, 2 x type S + empty tube, fitting DIN2353	8-200301-1000SW41
520319	Vacuum thermocouple 1200 mm, 2 x type S + empty tube, fitting DIN2353	8-200301-1200SW41

Equipped with 3 thermocouples type S (PtRh10% - Pt)

Material number	Description	Specification
92000933	Vacuum thermocouple 600 mm, 3 x type S + empty tube, fitting DIN2353	8-200401-0600SW41
92000934	Vacuum thermocouple 700 mm, 3 x type S + empty tube, fitting DIN2353	8-200401-0700SW41
92000935	Vacuum thermocouple 800 mm, 3 x type S + empty tube, fitting DIN2353	8-200401-0800SW41
92000936	Vacuum thermocouple 900 mm, 3 x type S + empty tube, fitting DIN2353	8-200401-0900SW41
92000937	Vacuum thermocouple 1000 mm, 3 x type S + empty tube, fitting DIN2353	8-200401-1000SW41
92000938	Vacuum thermocouple 1200 mm, 3 x type S + empty tube, fitting DIN2353	8-200401-1200SW41