

Isolating amplifiers

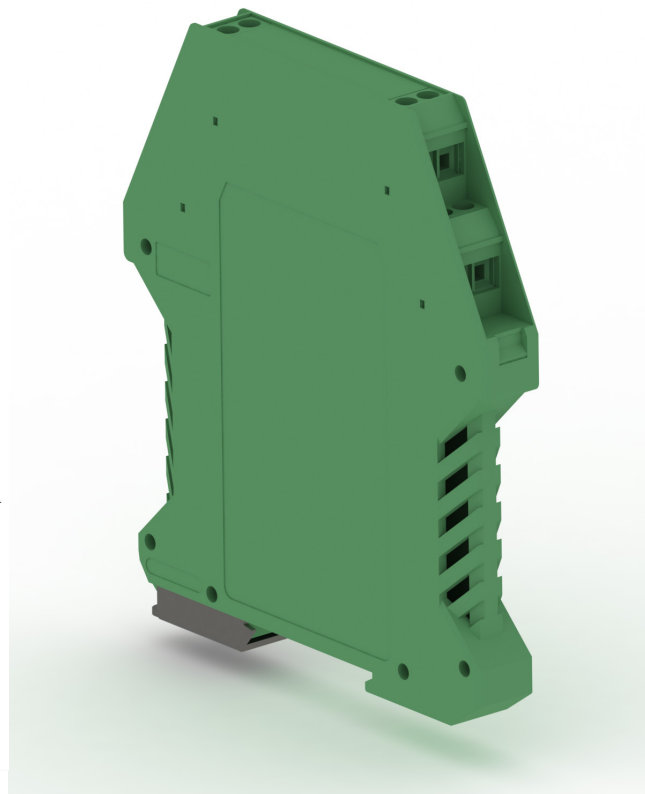
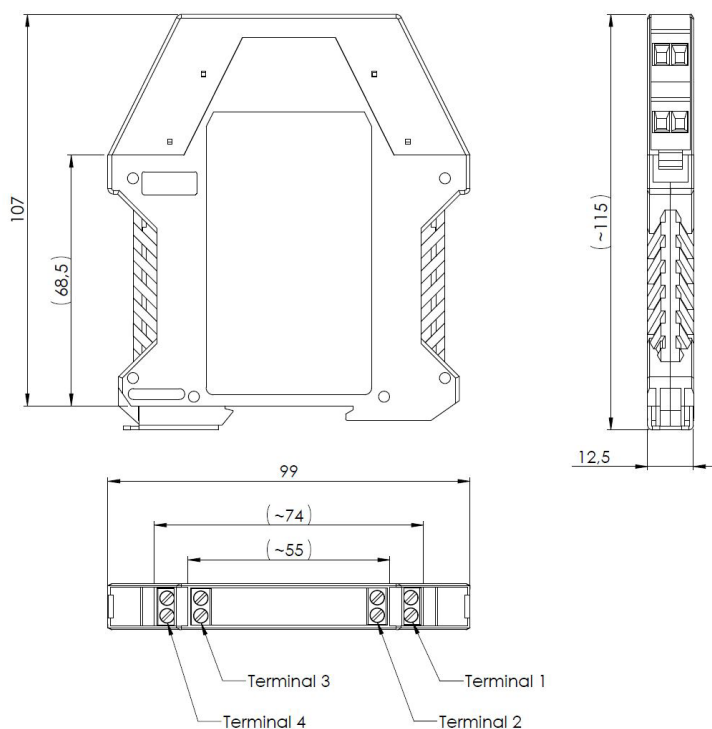
Isolating amplifiers

This amplifier is applied in environments where the probes output signal is interfered by magnetic fields or equipment with low inner resistance (such as old SPS units). Due to a very high inner resistance and a galvanic isolation this amplifier does not load the oxygen probe and ensures a save operation.

The output signal can be set as a $-2/+2V$ DC or $4..20mA$ signal. The power supply of the amplifier can be chosen between 48V or 230V. The different modes can be set via jumpers individually.

Following pins can be used:

- Terminal 1 – Power supply + / -
- Terminal 2 – Input signal emk probe + / -
- Terminal 3 – Output probe + / -
- Terminal 4 – not assigned



Material-No	Description	Specification
92001073	Isolating amplifiers Oxygen probe for DIN cap rail 48V/DC with $4..20mA$ Signal	TCA-TVOP-048-4A
92001074	Isolating amplifiers Oxygen probe for DIN cap rail 48V/DC with $-2V .. +2V$ Signal	TCA-TVOP-048-2V
92001085	Isolating amplifiers Oxygen probe for DIN cap rail 230V/AC with $4..20mA$ Signal	TCA-TVOP-230-4A
92001086	Isolating amplifiers Oxygen probe for DIN cap rail 230V/AC with $-2V .. +2V$ Signal	TCA-TVOP-230-2V